



VALVES   FITTINGS   TUBING   FLANGES   COUPLINGS   EXPANSION JOINTS   METALS   ENGINEERED PRODUCTS

**KEEPING THE WORLD FLOWING**





# MORE THAN JUST METRIC

## **YOUR TRUSTED ADVISOR IN MARINE, FLUID POWER & INDUSTRIAL SOLUTIONS**

If you're running a ship, managing a plant, or keeping a hydraulic system in check, you don't have the luxury of downtime, or the patience for vendors who don't get it.

**That's why World Wide Metric exists.**

For over 55 years, we've supported shipowners, fluid power professionals, and industrial maintenance teams with the products and solutions they need to keep everything flowing. From valves and flanges to hydraulic components and no-hot-work repairs, we help you stay ahead of failures and avoid costly delays.

We know your world moves fast, and when something breaks, you're the one expected to fix it. We're here to make your job easier - with trusted solutions, the right products, and the confidence you need to keep your world flowing.



# BUILT ON TRUST POWERED BY PEOPLE

Welcome,

You're responsible for keeping things running - whether that's a ship, a line, a system, or a team. And when things go wrong, all eyes are on you to make it right. I get that.

That's why I wanted to reach out personally.

At World Wide Metric, we've built our company around people like you - people who don't have time for delays, guesswork, or broken promises. You need components that fit, answers that come quick, and a team that has your back when the pressure's on. That's exactly what we deliver - every single time.

This business isn't about us - it's about you. Your deadlines, your crew, your customers. We want to make your life easier by being the kind of supplier you never have to second-guess.

If there's ever anything you need - whether it's a product, a solution, or just a second opinion - reach out. My team and I are here to help.

Thank you for the trust you've placed in us. I hold this in high regard.

All the best,

*George Contos*

**George Contos**  
CEO, World Wide Metric





## FLANGES



- **Slip On, Weld Nec, Blind, Lap Joint, Bulkhead, Manifold Covers, Marpol**
- **Specifications:** DIN, JIS and ANSI Standards
- **Size Range:** 10mm-1500mm (3/8"-60")
- **Pressure Range:** JIS-5K, 10K, 16K, 20K, 30K, 40K, DIN-PN6, PN10, PN16, PN25, PN40, PN63, PN100, PN160, ANSI-150, 300
- **Materials:** Carbon Steel, Stainless Steel 304L & 316L and other alloys

## EXPANSION JOINTS



### Rubber Expansion Joints

- Flanged to ANSI, DIN or JIS Standards
- **Size Range:** 1¼"-24" (32mm-600mm) and higher upon request
- Available Neoprene, Buna-N, EPDM, Viton

### Metal Fabricated Expansion Bellows and Spool

- Flanged to ANSI, DIN or JIS Standards
- Each item is made to order

### Slide Type Expansion Joints

- Flanged to ANSI, DIN or JIS Standards
- **Size Range:** 2"-24" (50mm-600mm)

## PIPE COUPLINGS



### Grip & Multiflex Couplings, Repair Clamps, and Fire Resistant

- SS304 Casing, NBR & EPDM sleeves\*
- **Size Range:** 1/2"(15mm-600mm)\*
- **Type Approved:** ABS, DNV, Lloyds and others

### Dresser Style Pipe Couplings

- **Style:** 38 and 40
- **Grade:** 27 and 42 Gaskets

### Rapid Repair Clamps

- **Size Range:** 38mm-930mm OD ( 1.5"-36")
- **Pressure:** up to 20 Bar ( 300 PSI)
- **Materials:** Marine Grade 316L Stainless
- Seat with Nitrile or Viton Seat
- Available in Single, Double, Triple, and Quad lever
- ABS Approved

\*More options available upon request

## COPPER NICKEL



### Copper Nickel 90/10 and 70/30

- **Type:** Seamless & Welded Pipe, Collars, Elbows, Tees, Reducers, Caps, Flanges, Saddles, & Pipe Fittings
- **On request:** Strainers and welded pipe systems
- **Size:** 6mm – 508mm OD; wall 1mm-11.0mm  
Larger sizes available upon request

## JIS VALVES



- **Type:** Gates, Globes, Angles, Venthead, Storm, Fire Hose, Ball, Checks (Wafer, Duo, Disc, Lift and Swing), Quick-Closing
- **Size Range:** 6A-600A. Larger sizes available upon request
- **Pressure Class:** 5K, 10K, 16K, 20K, 30K, 40K
- **Materials:** Bronze, Cast Iron, Ductile Iron, Cast Steel, Forged Steel, Stainless Steel and other alloys upon request

## DIN VALVES



- **Type:** Gates, Globes, Angles, Venthead, Storm, Fire Hose, Ball, Checks (Wafer, Duo, Disc, Lift and Swing), Relief, Quick-Closing, Pressure-Reducing & Safety
- **Size Range:** DN6 to DN600. Larger sizes available upon request
- **Pressure Class:** PN6, PN10, PN16, PN25, PN40, PN63, PN100 and PN160
- **Materials:** Bronze, Cast Iron, Ductile Iron, Cast Steel, Forged Steel, Stainless Steel and other alloys upon request

## FRESE CONTROL VALVES



- **Type:** PICV- Pressure independent control valves, 2 & 3-way rotary pressure & temperature control valves, 6-way control valves, Flow limiting-cartridge solution, Dynamic flow limiting wafer valves and actuators & accessories
- **Size Range:** DN10-DN800 (1/8"-32")
- **Pressure:** PN 16/25/40 & ANSI 150#
- **Materials:** Nickel Aluminum Bronze, Super Duplex SS, 316 SS, Brass, Cast/Ductile iron
- **Certification:** Det Norske Veritas-GL (DNV-GL) and Bureau Veritas(BV)
- **Ask about our FRESE FUELSAVE System and your complimentary vessel analysis**

## BUTTERFLY VALVES



## Wouter Witzel Eurovalves

- **Range:** EVS, EVL, EVCS, EVBS, EVBL, EVTLS, EVMS, EVML,
- **Size Range:** DN40-1000 (1 1/2"-40") \*
- **Type:** Wafer, Tapped Lug, Double Flanged, Teflon Lined, High Performance, Mono Flanged
- **Certifications:** Type approvals from ABS, Lloyds, DNV and others
- **Actuation:** Lever and Worm Gear operated. Hydraulic, Pneumatic, Motorized available upon request
- **Materials:** Body (Cast Iron, Ductile Iron, Steel, Stainless Steel, Bronze), Seat (NBR, EPDM, VITON, TEFLON, METAL), Disc and Stem-304 and 316L SS, Duplex SS, AL/BR

\* Larger sizes available upon request

## PRESS FITTING SYSTEM



### RM - Raccorderie Metalliche

- **Type:** Pipes, Fittings, Press Tools, Press Jaws & collars
- **Range:** InoxPRES, MARINEPRESS, steelPRES, AESPRES
- **Materials:** Stainless Steel 316L, Copper Nickel, Steel, Copper
- **Size:** DN15mm - DN108mm

## DRAIN SYSTEM



### RM - Raccorderie Metalliche

- **Type:** Drain Pipes, Fittings & Push Fit Joints
- **Sizes:** DN40, DN50, DN65, DN80, DN100, DN125, & DN 150
- **Materials:** 316L Stainless Steel (polished) and EPDM rubber seal push fit gravity / vacuum joint
- **Certification:** Fire resistant certified Class A Non-Combustible. DNV-GL, LR and Rina

## FITTERS & ADAPTORS



- **Compression Tube Fittings:** Metric and inch sizes
- **Flared Tube Fittings:** Metric and inch sizes
- **Conversion Adaptors**
- **Solder Fittings:** Metric sizes; Copper Alloys
- **Threaded Fittings:** NPT, BSPT and BSPP
- **Butt Weld:** Metric and inch sizes
- **Materials:** Aluminum Brass, Brass, Bronze, Copper, Malleable Iron, Steel, Stainless Steel

## TUBING - COPPER ALLOYS



### Copper Tubes in Straight Lengths and Coiled Form

- **Size Range:** 4mm-108mm O.D.
- **Pancake Coils Available:** 10, 20, 30 meter coils
- **Also available in level wound coils**

### Aluminum Brass Tubes

- **Size Range:** 10mm-108mm O.D
- **Wall thickness:** 1-2.5mm



## HYDRAULIC FITTINGS



### CAST S.p.A.

- **Specifications:** DIN 2353 Compression Tube Fittings  
BSI 5200 Threaded Adaptors  
SAE J514 37 Flared Tube Fittings  
SAE J1453 ORFS Fittings  
SAE J516 Hose Fittings
- **Size Range:** 4mm-42mm (1/8"-2")
- **Threads:** NPT, BSPP, BSPT, Metric, SAE, UNF, O-Ring Boss
- **Materials:** Carbon Steel and Stainless Steel

## TUBING - HYDRAULIC



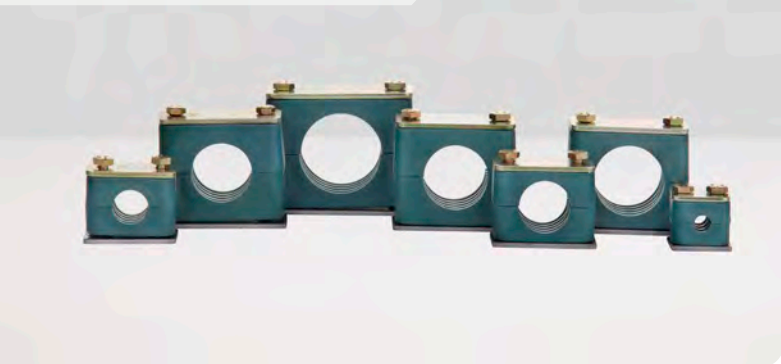
### Carbon Steel Precision Seamless Tubing

- **Size Range:** Metric: 4mm-50mm O.D. | Inch: 3/16" - 1 1/2"
- **Wall Thickness:** 1.0mm-5.0mm and .035-.120
- **Grade:** ST 35 and 37.4 BK and NBK, E235+N
- **Available:** Phosphated, Plated Chromium-VI-Free (CR6Free)

### Stainless Steel Tubing

- **Size Range:** Metric: 4mm-42mm O.D | Inch: 3/16"-1 1/2"
- **Wall Thickness Range:** 1.0mm-4.0mm and .035-.120
- **Grade:** 304/304L, 316/316L, 316 Ti
- **Available:** Polished and mill finish, seamless and welded

## TUBE CLAMPS



- **Type:** Standard Series, Heavy Series, Twin Series
- **Size Range:** 6mm-101.6mm OD (1/4-4")
- **Available:** Carbon Steel and Stainless Hardware

## ACCESSORIES



- **PCS Tape - Anti-Corrosion**
- **Anti-Splash Tape**
- **Insulation Tape**
- **Poly Bulk Bag:** Ash bags, Polypropylene 1-2 & 4 Loop Bags
- **3 Cartridge Filters**
- **Bale Compactor Straps**



#### Eastern Region

37 Readington Road  
Branchburg, NJ 08876  
Tel: 732.247.2300  
Fax: 732.247.7258

#### Southeastern Region

2405 College Ave. Suite 101  
Davie, FL 33317  
Tel: 954.321.0784  
Fax: 954.321.2591

#### Gulf Region

2103 E. Governor's Circle  
Houston, TX 77092  
Tel: 713.682.2400  
Fax: 713.682.2481

#### Western Region

16360 Downey Avenue  
Paramount, CA 90723  
Tel: 562.633.4141  
Fax: 562.633.3280



[sales@worldwidemetric.com](mailto:sales@worldwidemetric.com)

**WORLDWIDEMETRIC.COM**